

# HOUSED EASY-CLEAN ROUND GRID MAGNET

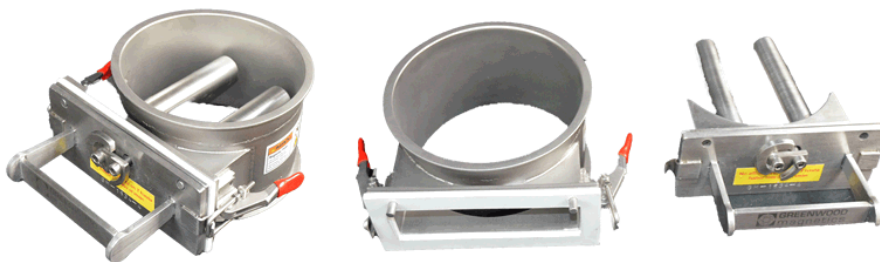


## DESCRIPTION

The Greenwood Housed Easy Clean Round Grid is designed to fit into round chutes with limited height available. For round chutes, the usual solution is to fit a rectangular easy-clean grid box with transitions to the round pipe. However, these require approximately 200-250mm of space as a minimum. The Housed Easy-Clean Round Grid is only 100mm high.

Working in a similar way to Easy Clean Grid Boxes, by undoing the side clamps, the inner magnetic tubes can be completely removed from the housing for "easy clean" outside the process.

Once outside the process, swivel the "G" catch and the inner magnetic rods slide out, causing the metal to fall off outside the process.



## FEATURES

- Easily installed
- Direct access to magnets in chute
- Ideal for round chutes with restricted height available
- Easy Clean facility
- High intensity Rare Earth magnets
- Connections to your requirements
- Magnetic strength tested and certified
- Supplied with full documentation and material certificates

## SPECIFICATION

- Standard height 100mm
- Contact parts – 304/316 stainless steel as required
- Manufactured to food industry standards
- Manufactured to your specific dimensions
- Tube spacing set according to product processed and rate of flow
- Magnet strength - standard up to 10000 gauss
- Magnetic strength tested and certified
- Supplied with full documentation and material certificates
- Bead blast or polished finish
- Suitable for use in ATEX zone 20 internal environment

Greenwood Magnetics Ltd  
Unit 1 Buckley Road Industrial Estate  
Buckley Road, Rochdale  
Lancashire OL12 9EF

**T** +44 (0) 1706 645 824

**F** +44 (0) 1706 642 458

**E** [sales@greenwoodmagnetics.com](mailto:sales@greenwoodmagnetics.com)